

WHEELCHAIR SPACES AT WAITING ROOMS

H2-110



SUTTER HEALTH - PHYSICAL ACCESS COMPLIANCE

H2 Number

AUTHOR: BILL ZELLMER

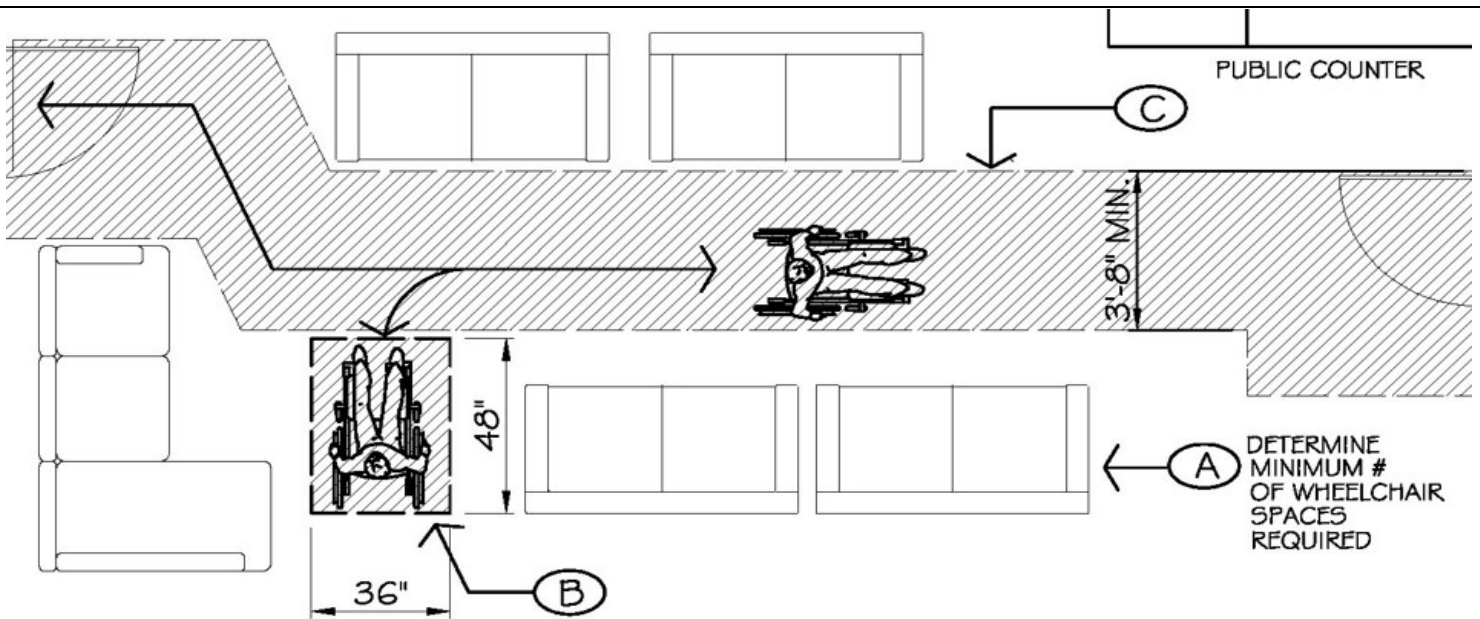
ISSUE DATE: 7-25-2015

APPLICABLE CODES: 2010 ADA & 2019 CBC

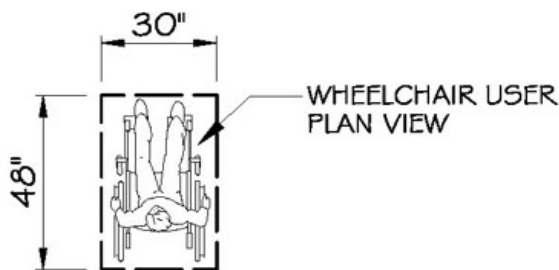
REVISED DATE: 10-19-2019

CBC CODE SECTIONS: 11B-802.1 AND 11B-805.3

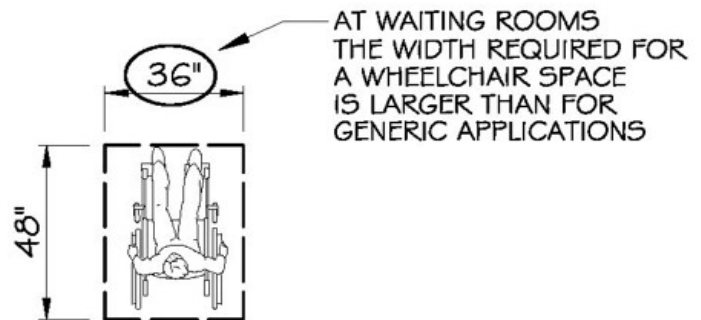
- A: AT ALL MEDICAL WAITING ROOMS: AT LEAST 5% OF ALL SEATING SPACES, SHALL BE SPACES FOR WHEELCHAIRS. IF THE WAITING ROOM SERVES FACILITIES SPECIALIZING IN CONDITIONS THAT AFFECT MOBILITY, 10% IS REQUIRED. EXAMPLE: 12 SEATING SPACES ARE PROVIDED IN PLAN BELOW; 5% OF 12 = .6. WHEELCHAIR SPACES REQ'D. = 1
- B: WHEELCHAIR SPACES MUST BE 36" X 48" AND SHALL NOT BE OBSTRUCTED BY FURNITURE OR OTHER OBSTACLES. IT IS NOT NECESSARY TO PROVIDE SIGNS OF ANY SORT, NOR IS IT REQUIRED TO PROVIDE ANY MARKING ON THE FLOOR OF ANY SORT.
- C: MAINTAIN A 44" WIDE AISLE, FREE OF ANY FURNITURE OR EQUIPMENT.



EXAMPLE: WAITING ROOM LAYOUT



WHEELCHAIR SPACE:
GENERIC



WHEELCHAIR SPACE:
AT WAITING ROOMS